

Date: 02/02/22

## **Project Status Overview**

Conversion progress continued over the past two weeks with crews working mostly on residential and local roadways of Segment 4. Just over 200 lights remain to be converted to LED. Despite the recent storms, the conversion and deferred maintenance work is running smoothly and still anticipate completing the conversion work by the end of February. The website and phone line continue to receive submissions for shield requests or other comments, with several positive notes over the past two weeks about residents' increased quality of life. Segment 3 is complete and the before and after drone flyover video will be available on SantaFeLED.com on Friday, February 4<sup>th</sup>.

## **Continuing Community Engagement**

### **WEBSITE & FEEDBACK FORM**

Since the 01/19/22 update, the feedback form has received shield requests or general feedback from eight additional residents, bringing the total number of residents having submitted feedback or a request to 55.

Additional side shielding has been requested by three residents since the last report, bringing the total house-side shield request count to 28. A Dalkia representative calls each requestor to discuss the request and gather further details about the specific light or lights needing shielding. The shield can be installed anywhere on the luminaire so we work to identify the angle of the fugitive light to ensure the shield will be correctly placed to satisfy the resident's request. Inclement weather has caused delays in fulfilling recent shield requests. Recent requests will be fulfilled as soon as possible.

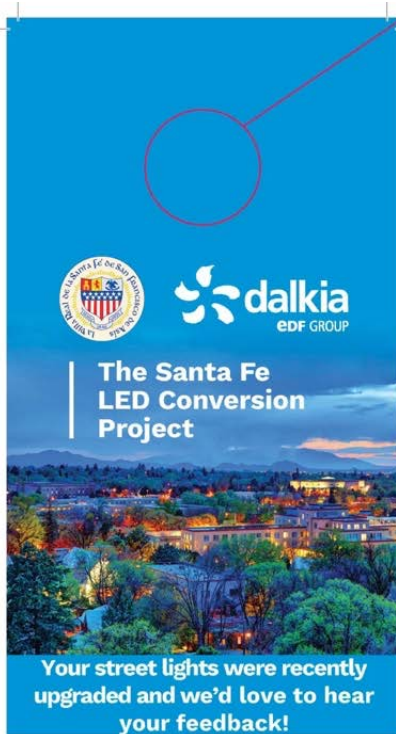
Requests for additional lights and removal of lights have been received and we are working closely with Staff to develop appropriate procedures to address these types of requests after the conversion is complete. Other submissions included questions and general comments. These requests are answered with an email or a phone call.

Each submission that has been received since the last report on 01/19/22 can be viewed in the appendix of this report. Previously received submissions can be viewed in recent reports on SantaFeLED.com.

Date: 02/02/22

DOOR HANGERS

Door hanger distribution is almost complete, with 1,648 door hangers having been hung. The 315 door hangers remaining will be distributed by the end of next week. One side of the door hanger is printed in English and one side is printed in Spanish. We have seen increased website traffic and use of the feedback form!



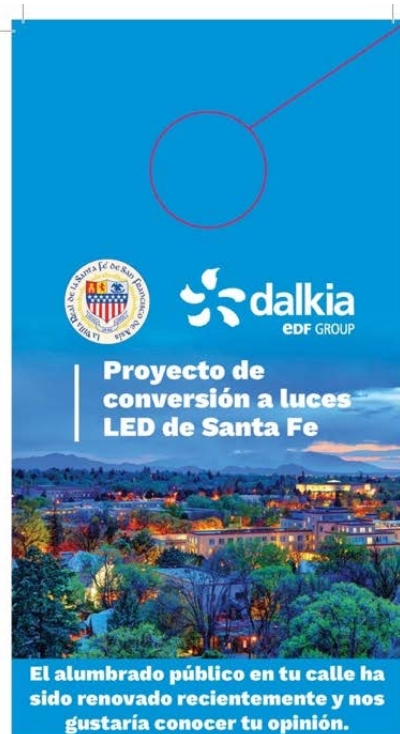
Scan the QR code with your phone for more information.



SantaFeLED.com

or call us!  
Phone: 505.219.3780

394-DalkiaSantaFe-DoorHanger.indd 1



Escanea el código QR con tu teléfono móvil para obtener más información.



SantaFeLED.com

¡o llámanos!  
Teléfono: 505.219.3780

9/6/21 12:26 P

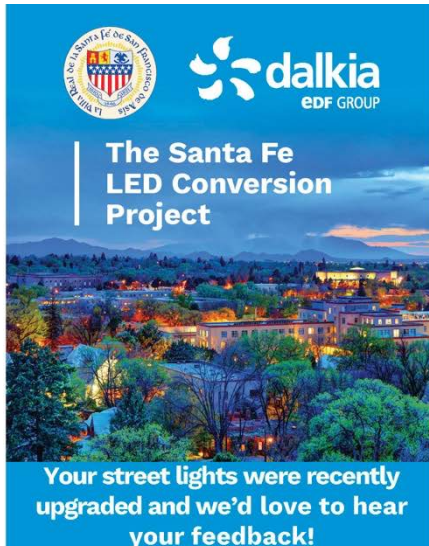
394-DalkiaSantaFe-DoorHanger.indd 1

9/6/21 12:26 P

Date: 02/02/22

### INFORMATION CARDS

Each operational truck continues to be stocked with information cards. Our crews have reported several instances of being approached by community-members and providing them with a card to submit their feedback, with over 141 cards having been distributed to date.



Scan the QR code with your phone for more information.

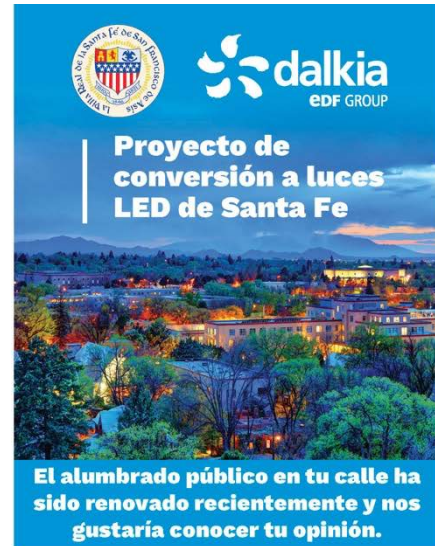


[SantaFeLED.com](http://SantaFeLED.com)

or call us!  
Phone: 505.219.3780

394-DalkiaSantaFe-DoorHanger.indd 1

9/6/21 12:26 P



Escanea el código QR con tu teléfono móvil para obtener más información.



[SantaFeLED.com](http://SantaFeLED.com)

¡o llámanos!  
Teléfono: 505.219.3780

394-DalkiaSantaFe-DoorHanger.indd 1

9/6/21 12:26 P

### DRONE FOOTAGE

Before and after drone flyover footage from Segment 3 will be posted to SantaFeLED.com on Friday, February 4! Segment 2 drone footage is not yet available as a portion of lights are incomplete due to material delays. Segment 1 drone footage has been available on SantaFeLED.com. Conversion in Segment 4 is still ongoing and a video will be available once work is complete.

Date: 02/02/22

### Conversion Work Completed from 01/19/21 – 02/02/22

#### FIXTURES CONVERTED TO DATE

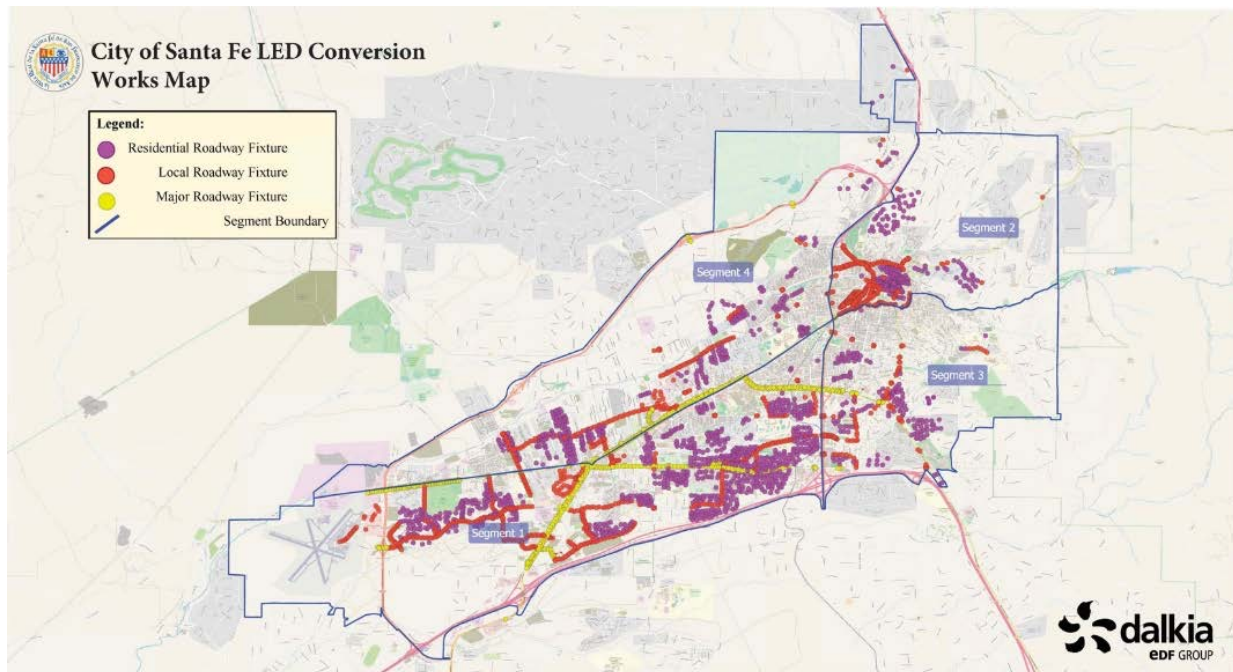
Total Complete: 2,975

Residential: 1,379

Local: 958

Major: 536

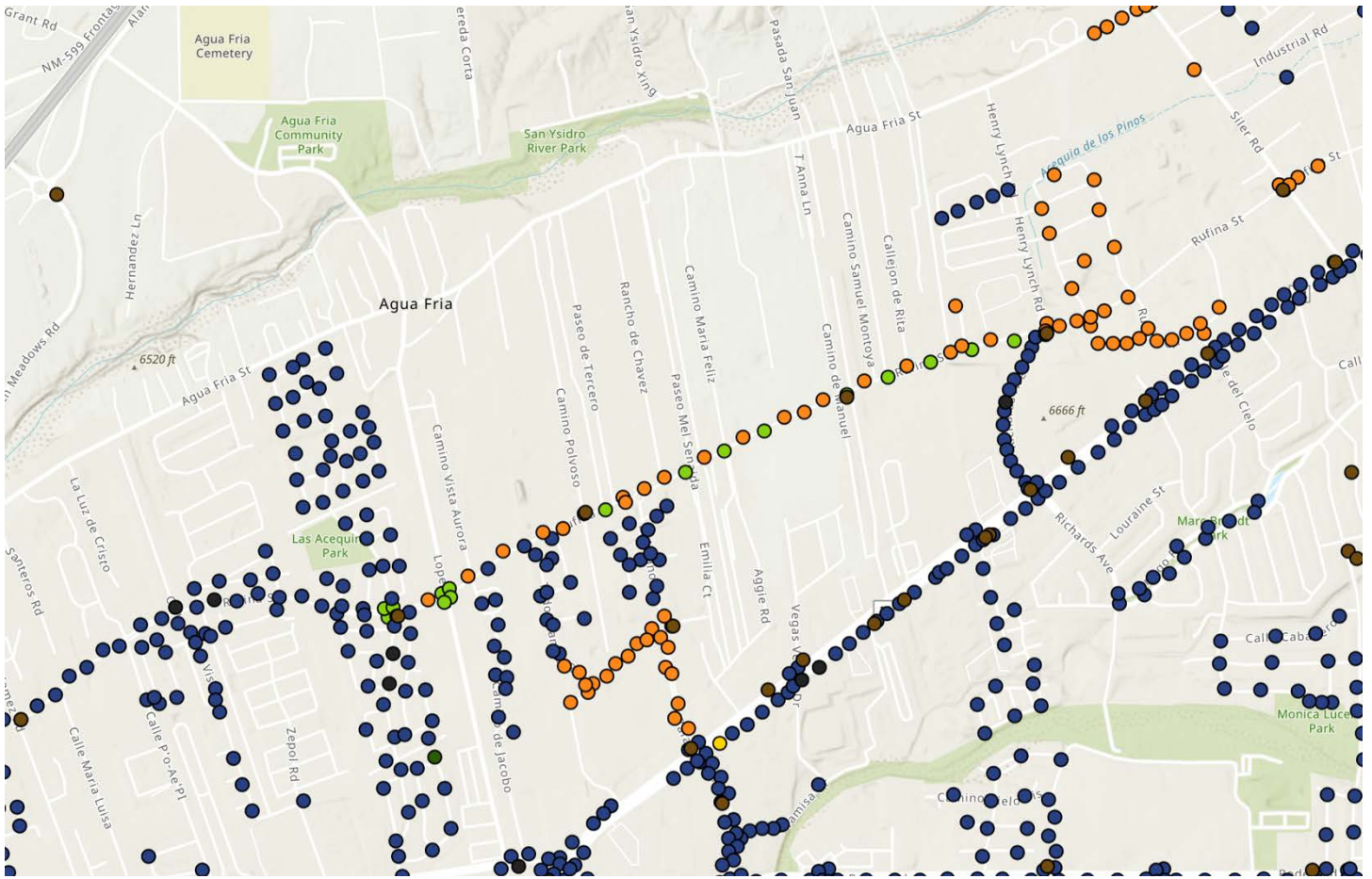
Watts Reduced to Date: -346,664 W



The maps on the following pages show work that has been completed between January 19, 2022 and February 2, 2022.



Date: 02/02/22

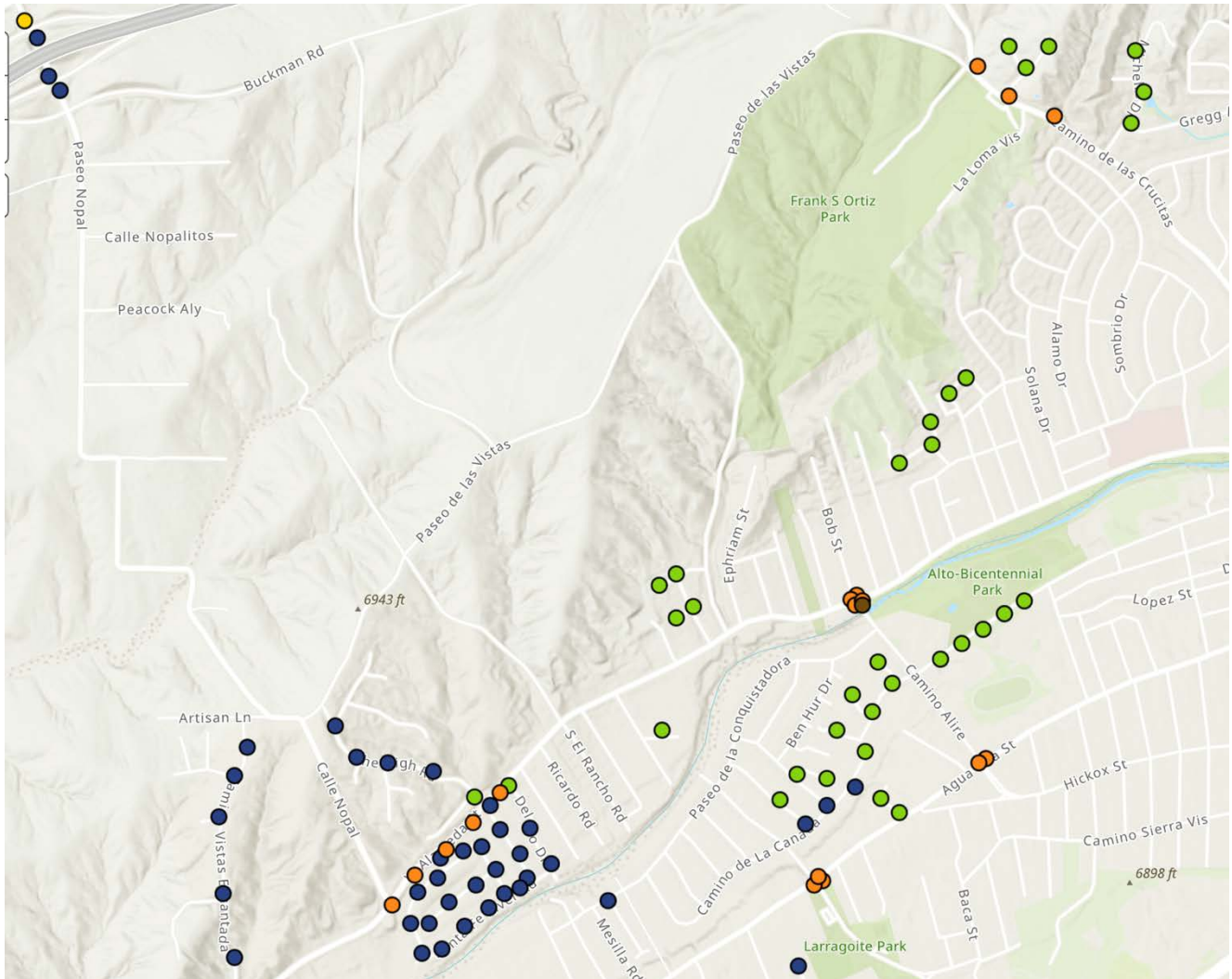


FIXTURES CONVERTED through 02/02/22 GREEN DOTS & BLUE DOTS = COMPLETED FIXTURE

**LEGEND**

- ALL BLUE = COMPLETED FIXTURES, FIELD VERIFICATION COMPLETE
- ALL GREEN = COMPLETED FIXTURES, AWAITING FIELD VERIFICATION
- YELLOW = FIXTURE TO BE CONVERTED, MAJOR ROADWAY
- ORANGE = FIXTURE TO BE CONVERTED, LOCAL ROADWAY
- PINK = FIXTURE TO BE CONVERTED, RESIDENTIAL ROADWAY
- BROWN = CONTACTORS (ELECTRICAL EQUIPMENT)
- RED OR GRAY = ADDITIONAL MAINTENANCE REQUIRED BY PNM (DISTRIBUTION-SIDE WORK)
- WHITE = NEW DEVELOPMENT, AUTHORIZATION REQUIRED PRIOR TO WORK

Date: 02/02/22



FIXTURES CONVERTED through 02/02/22 GREEN DOTS & BLUE DOTS = COMPLETED FIXTURE

**LEGEND**

- ALL BLUE = COMPLETED FIXTURES, FIELD VERIFICATION COMPLETE
- ALL GREEN = COMPLETED FIXTURES, AWAITING FIELD VERIFICATION
- YELLOW = FIXTURE TO BE CONVERTED, MAJOR ROADWAY
- ORANGE = FIXTURE TO BE CONVERTED, LOCAL ROADWAY
- PINK = FIXTURE TO BE CONVERTED, RESIDENTIAL ROADWAY
- BROWN = CONTACTORS (ELECTRICAL EQUIPMENT)
- RED OR GRAY = ADDITIONAL MAINTENANCE REQUIRED BY PNM (DISTRIBUTION-SIDE WORK)
- WHITE = NEW DEVELOPMENT, AUTHORIZATION REQUIRED PRIOR TO WORK



Date: 02/02/22

## Appendix A: Website Form Submissions



Conversion Date	What is the nature of your response?	Comment/Question	First Name	Street Address
1/30/22	Request a house-side shield	My house is sited on a rise above the intersection of Camino Cabra and Upper Canyon Road. Two streetlights across from me were shielded years ago by PNM since they shine directly into my yard and windows. I ask that when they are replaced with LEDS that they are shielded in a similar way. Please let me know how to coordinate this with you.	George	Camino San Acacio
1/28/22	Request a house-side shield	My bedroom is right behind the light and I have floor to ceiling windows on the entire wall facing the light. It would be amazingly wonderful to get a house side shield installed on the light! Thank you so much!	Pamela	Santa Fe River Rd
1/26/22	Request a house-side shield	I was told a Shield would be put on the light on Siringo Road that shines in my yard and house. I'm at 2099 Placita de Vida at the end of a cul de sac, the wall behind my house abuts Siringo and the light hat would be at the corner of Siringo and Placita de Vida, if it connected through is the light I was told would have a shield on it by last week.	Alexandra	Placita de Vida



Conversion Date	What is the nature of your response?	Comment/Question	First Name	Street Address
1/29/22	Request additional lighting	I do not believe toy have done Camino San Patricio. The same 2 lights I have been reporting as burned out for the las 2 to 3 years are still off. The street is still extremely dark	Pablo Orlando	Camino San Patricio
1/27/22	Provide feedback on future dimming	Thank you..love new streetlight. I called your phone number too. I walk every morning usually in the dark with my dogs and I noticed nice diffuse lighting with a greater area of coverage right away. Very nice!	Elizabeth	Calle Linda
1/24/22	Provide feedback on your experience with the conversion	I've vehemently disliked those orange streetlights since they arrived, so THANK YOU, the new lights are 100% better!	KYMBERLIE	Acequia Borrada W
1/21/22	Report an outage	Street Lights in front of 1060 Cerrillos Road which is in front of the New Mexico School for the Deaf. These lights were reported to PNM which they are saying they belong to the city of Santa Fe. This area is very dangerous and dark at night. I am of security officer here at the school and my job is to ensure the safety and security of my staff and students.	Martin	Cerrillos Rd
1/20/22	Report an outage	Street light out behind 2909 Corte del Porto. off of Galisteo st. has been out since 11/30/21.	Raquel	Corte del Porto