

Project Status Overview

The conversion of lights continued throughout the south/southwest side of Santa Fe over the past week and a half. To date, over 400 fixtures have been converted and we are beginning the process of converting to the new rate with PNM. Almost 200 door hangers have been distributed and the website has received increased traffic and engagement.

Conversion Work Completed from 10/20/21 – 11/03/21

FIXTURES CONVERTED

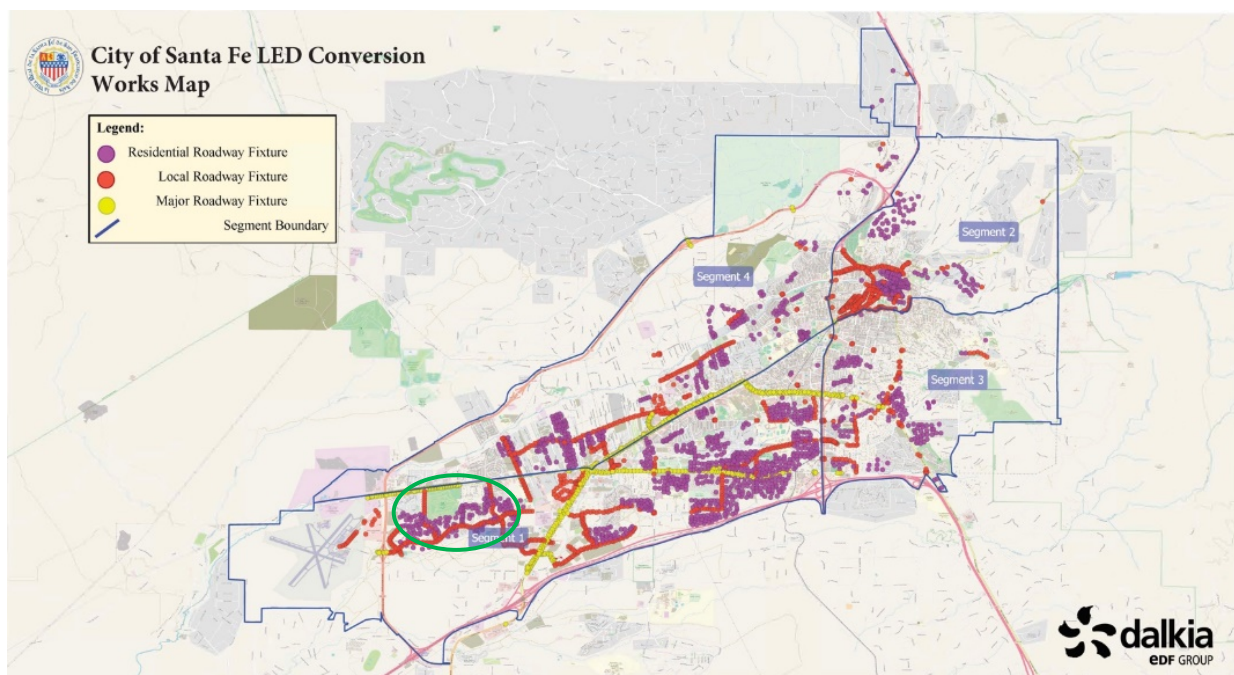
Total Complete: 476

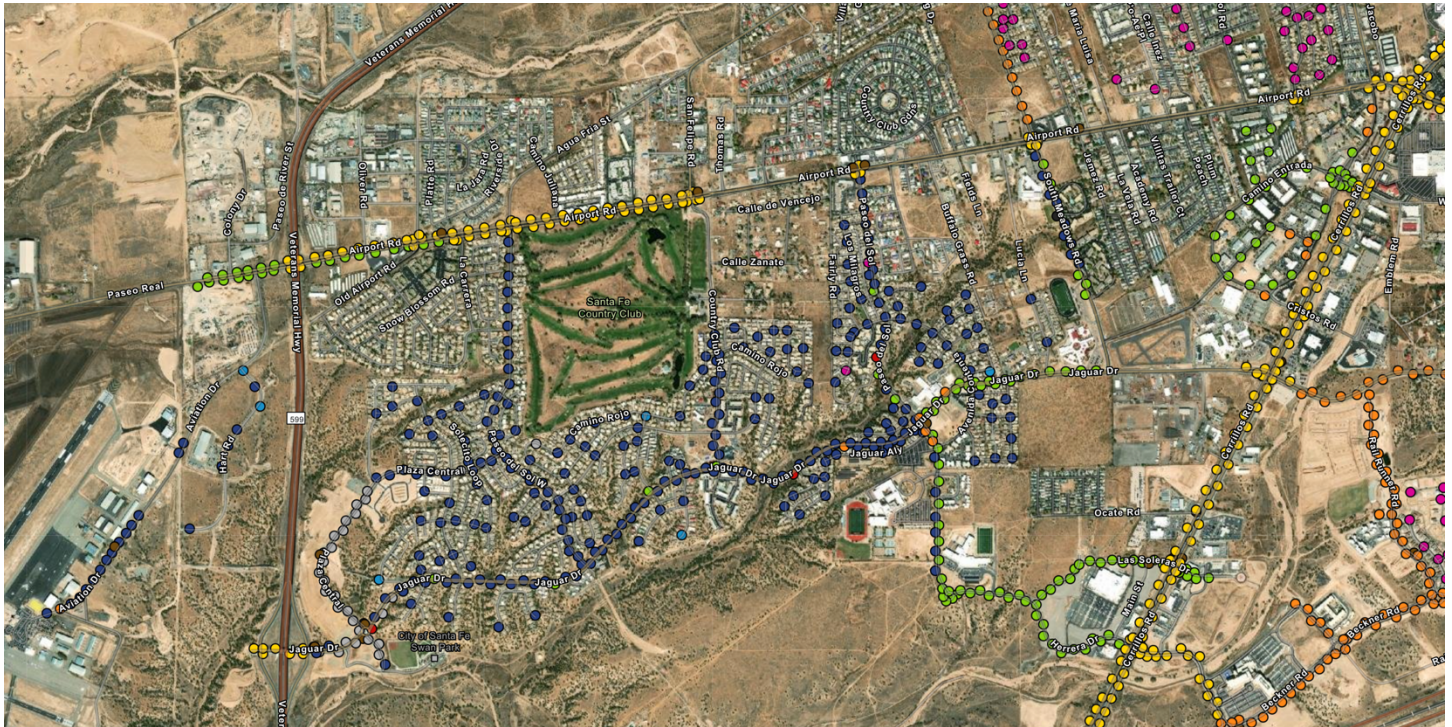
Residential: 170

Local: 284

Major: 22

Watts Reduced to Date: -59,692 W

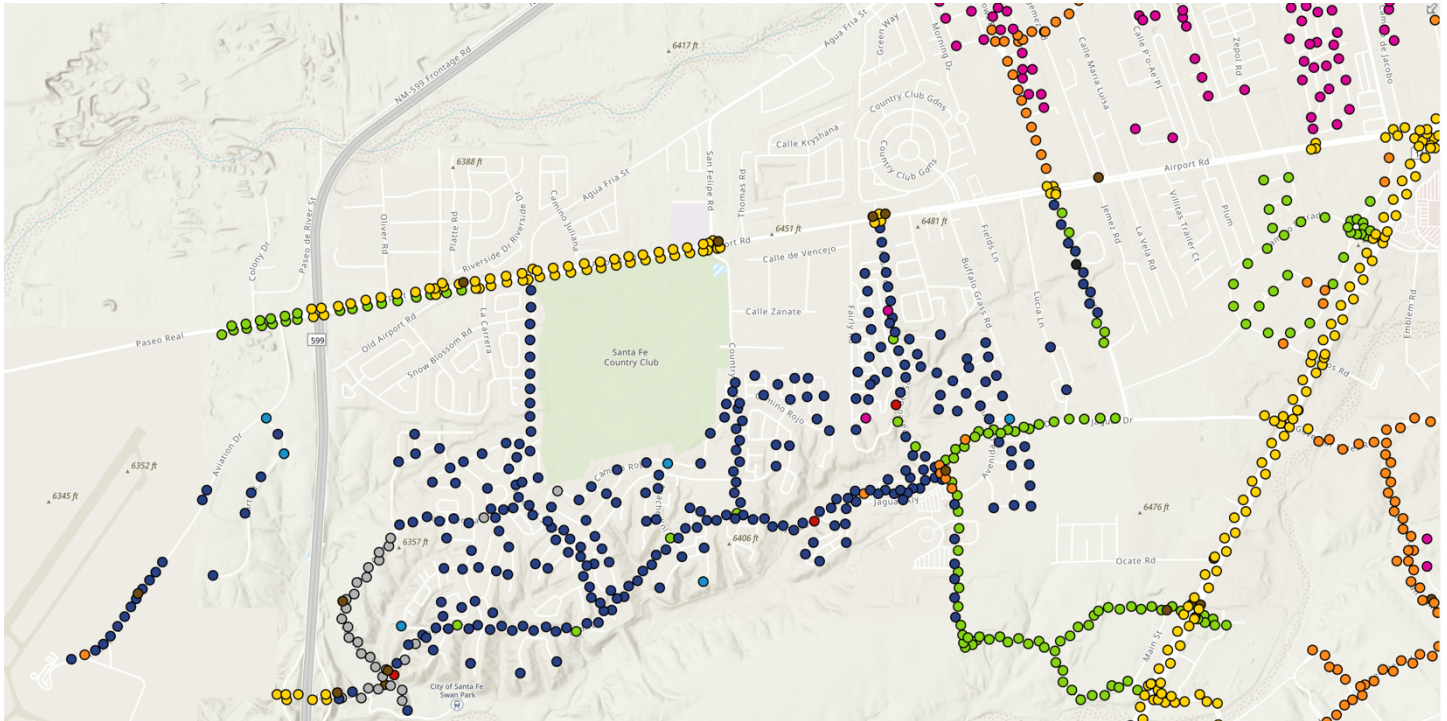




FIXTURES CONVERTED through 11/03/21 GREEN DOTS & BLUE DOTS = COMPLETED FIXTURES

LEGEND

ALL BLUE = COMPLETED FIXTURES, FIELD VERIFICATION COMPLETE
 ALL GREEN = COMPLETED FIXTURES, AWAITING FIELD VERIFICATION
 YELLOW = FIXTURE TO BE CONVERTED, MAJOR ROADWAY
 ORANGE = FIXTURE TO BE CONVERTED, LOCAL ROADWAY
 PINK = FIXTURE TO BE CONVERTED, RESIDENTIAL ROADWAY
 BROWN = CONTACTORS (ELECTRICAL EQUIPMENT)
 RED OR GRAY = ADDITIONAL MAINTENANCE REQUIRED BY PNM (DISTRIBUTION-SIDE WORK)



FIXTURES CONVERTED through 11/03/21 GREEN DOTS & BLUE DOTS = COMPLETED FIXTURES

LEGEND

ALL BLUE = COMPLETED FIXTURES, FIELD VERIFICATION COMPLETE
 ALL GREEN = COMPLETED FIXTURES, AWAITING FIELD VERIFICATION
 YELLOW = FIXTURE TO BE CONVERTED, MAJOR ROADWAY
 ORANGE = FIXTURE TO BE CONVERTED, LOCAL ROADWAY
 PINK = FIXTURE TO BE CONVERTED, RESIDENTIAL ROADWAY
 BROWN = CONTACTORS (ELECTRICAL EQUIPMENT)
 RED OR GRAY = ADDITIONAL MAINTENANCE REQUIRED BY PNM (DISTRIBUTION-SIDE WORK)

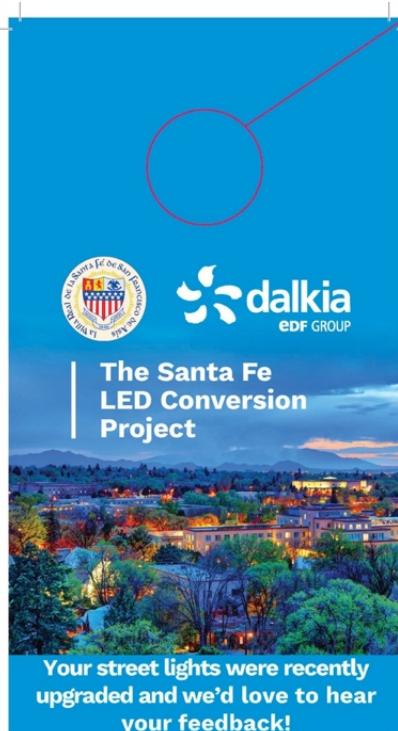
ADDITIONAL MAINTENANCE COMPLETED

- Leaning poles, straightened
- Misshapen pole arms cut to achieve proper fit
- Fuses and wiring repairs

Continuous Community Engagement

DOOR HANGERS

Door hangers continuing to be distributed, with 197 having been distributed to date. One side of the door hanger is printed in English and one side is printed in Spanish.



Scan the QR code with your phone for more information.

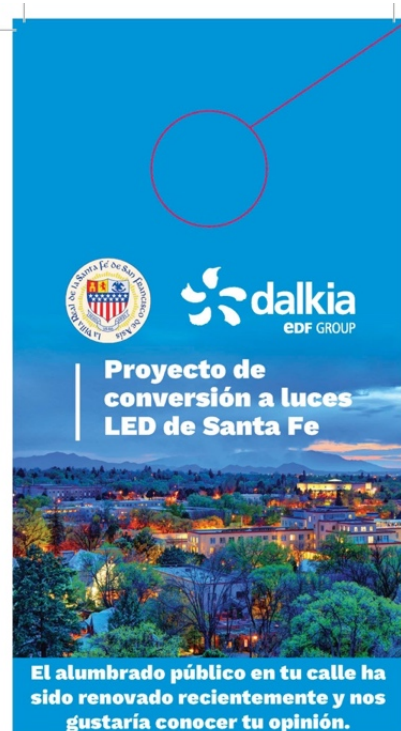


SantaFeLED.com

or call us!
Phone: 505.219.3780

394-DalkiaSantaFe-DoorHanger.indd 1

9/6/21 12:26 P



Escanea el código QR con tu teléfono móvil para obtener más información.



SantaFeLED.com

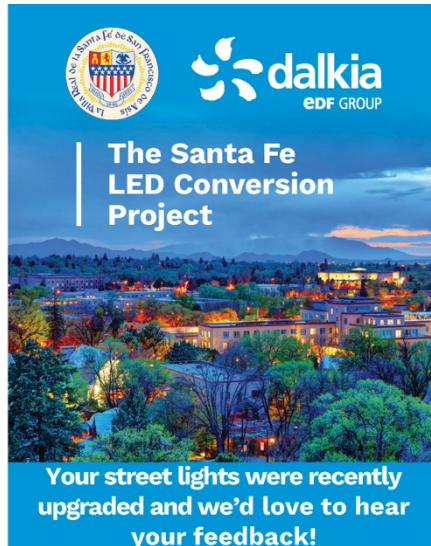
¡o llámanos!
Teléfono: 505.219.3780

394-DalkiaSantaFe-DoorHanger.indd 1

9/6/21 12:26 P

INFORMATION CARDS

Each operational truck continues to be stocked with information cards. Our crews have reported several instances of being approached by community-members and providing them with a card to submit their feedback, with over 20 cards having been distributed to date.



Scan the QR code with your phone for more information.



SantaFeLED.com

or call us!
Phone: 505.219.3780

394-DalkiaSantaFe-DoorHanger.indd 1

9/8/21 12:28 P



Escanea el código QR con tu teléfono móvil para obtener más información.



SantaFeLED.com

¡o llámanos!
Teléfono: 505.219.3780

394-DalkiaSantaFe-DoorHanger.indd 1

9/8/21 12:28 P

DRONE FOOTAGE

Drone footage of the existing conditions of the street lighting infrastructure has been collected and is being rendered. We look forward to compiling the “before and after” footage to visually demonstration the improvements achieved through this project.