

## Project Status Overview

Public Engagement continued with a newsletter distributed to email list and project website updated for public input and information pertinent to this phase of the project. The conversion of lights began Monday, October 18<sup>th</sup>, 2021 near the Santa Fe Airport. There are two crews operating with plan to ramp up number of crews as operational procedures are further validated. Installation is running smoothly.

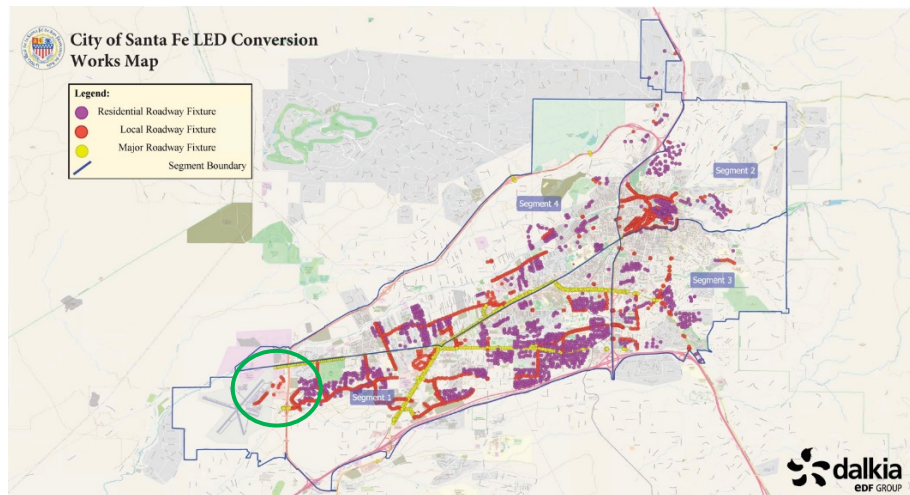
## Conversion Completed from 10/18/21 - 10/20/21

### FIXTURES CONVERTED

Residential: 41

Local: 38

Watts Reduced to Date: -8,464 kWh



FIXTURES CONVERTED 10/18/21 – 10/20/21    GREEN DOTS = COMPLETED FIXTURES

## Residential Fixtures Being Converted in Tierra Contenta

After the fixture and the smart node are installed, the smart node is connected to the network system and the fixture is tested for 30 seconds to ensure proper functionality.





## Continuing Community Engagement

### NEWSLETTER

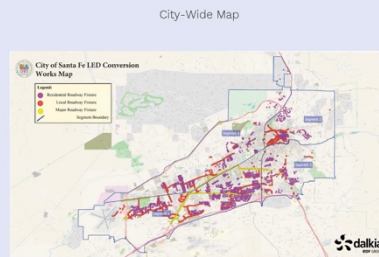
The fifth project newsletter was distributed via email 254 email addresses on September 29, 2021. The newsletter included information about the conversion plan, a city-wide map, maps of each of the four installation Segments and FAQs. This information in the newsletter can be found at [SantaFeLED.com](http://SantaFeLED.com).



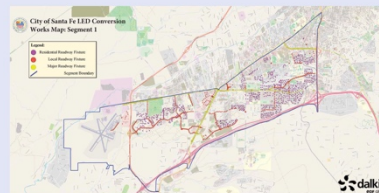
The City of Santa Fe is eager to continue moving forward with upgrading the city's street lighting infrastructure to a more **energy-efficient** and **reliable** LED system. Material is ordered and will be arriving at the beginning of October.

**We look forward to kicking off the conversion on October 18<sup>th</sup>, 2021.**

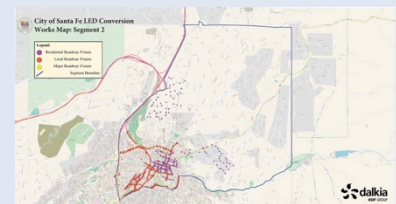
Segment	Location	Description	Estimated Duration
Segment 1	Southwest	North of I-25, South of 284, West of 14.	1.5 months
Segment 2	Downtown (Northeast)	Downtown and North of Downtown	0.5 months
Segment 3	Southeast	South of 14 and 475, North of I-25	1 month
Segment 4	Northwest	North of 284, South of 589, West of 285	1 month



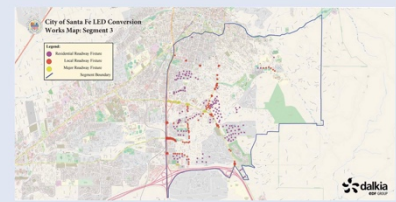
Segment 1 Map



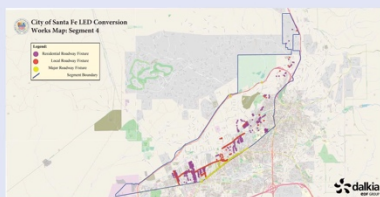
Segment 2 Map



Segment 3 Map



Segment 4 Map



#### We would love to hear from you after your street has been converted!

During the conversion, Dalkia crews will be distributing door hangers on a sample of residences in the City.

There will be a QR code which links to the [www.SantaFeLED.com](http://www.SantaFeLED.com), which will feature a new feedback form. Alternatively, it will list the phone number for our New Mexico office, where feedback can also be submitted. Door hangers will be in English and Spanish.

Simply provide your address to submit your feedback on your recently-converted street!

You will be able to do the following:

1. Request a house-side shield
2. Provide feedback on your experience with the conversion
3. Request additional lighting
4. Request for a light to be removed
5. Provide feedback on future dimming

#### FAQs

##### What are the specifications of the new LED street lights?

The Community-Guided Smart Street Lighting Design specifications approved by the Governing Body on May 26, 2021 are summarized in the table below. All city-owned street lights will also feature a smart node.

Roadway Type	Correlated Color Temperature (Kelvin)	Input Voltage Range (V)	Nominal Lumen Output Range (lumens)	Minimum Color Rendering Index	IES Distribution	Visual Comfort Reflector	IES TM-18 Backlight, UPGRADE, and glare Rating	E	U	G
Residential	2700K	28-45	4,000-5,000	70	Type 2	Required	1	0	1	
Local/Collector	3000K	80-100	8,000-12,000	70	Type 2 or Type 3	Required	2	0	2	
Major	3000K	180-200	25,000-28,000	70	Type 2 or Type 3	Not required	3	0	3	

Street lights on NMDOT-owned roads will not be converted until NMDOT guidelines are updated to allow 3000K color temperature luminaires.

Make, model, and full specifications for the fixtures being installed will be available on the project website [www.SantaFeLED.com](http://www.SantaFeLED.com).

##### When will my street be converted?

Your street will be converted according to the Segment maps provided above.

We will move through the City in the following order:

- Segment 1: Southwest
- Segment 2: Downtown (Northeast)
- Segment 3: Southeast
- Segment 4: Northwest

##### What can I expect when the lights on my street are converted?

Our crews will be working during daytime hours in most cases throughout the conversion.

Following safe working practices, crews will use a bucket truck to reach the pole head, remove the existing HPS fixture and install a new LED fixture along with a smart node on the top of each fixture. The node serves two purposes: 1) It has a photo cell to turn on/off the fixture based on sun light levels, and 2) It is a communication device that enables each light to be controlled and monitored remotely. The installation process can take anywhere from 20-60 minutes per luminaire, depending on conditions.

Maintenance of Traffic (MoT) procedures will include arrow boards, additional vehicles, and additional personnel, in compliance with OSHA and FHWA standards.

##### How will existing HPS lights be maintained prior to their conversion to LED?

For maintenance issues on existing HPS lights in Santa Fe, report by calling 888-DIAL-PNM or visit [www.PNM.com/streetlights](http://www.PNM.com/streetlights)

##### How can I request maintenance on the new LED street lights?

Please submit requests (house-side shields, outage, on during daytime hours, etc.) to the form at [www.SantaFeLED.com](http://www.SantaFeLED.com) or call 505-219-3780. Dalkia will maintain city-owned LED street lighting assets. PNM maintains PNM-owned street lighting assets and we will forward requests for PNM-maintained assets to PNM.

##### What happens to the old HPS lights?

Lamps and ballasts removed from the project for recycling will have chain of custody documentation and a recycling certificate from the recycling facility provided to the City with associated performance indicators.

##### What types of community engagement can I expect during the conversion?

Dalkia is excited to continue to engage with the communities of Santa Fe throughout the conversion process. We are excited to offer an English and Spanish version of the project website.

- [www.SantaFeLED.com](http://www.SantaFeLED.com) will feature updates of work for the coming week and work already completed.
- Dalkia will perform photometric analyses and colorimetry analysis for design validation – results will be posted on the project website.
- Drone footage will be captured of the city before and after the conversion – results will be posted on the project website.
- [www.SantaFeLED.com](http://www.SantaFeLED.com) will feature a new feedback form for constituents in recently-converted areas. Door hangers will be distributed with a link.
- A phone line to Dalkia's New Mexico office is available for a secondary communication mechanism.
- Newsletter update will come near completion of conversion.

More information coming soon at [www.SantaFeLED.com](http://www.SantaFeLED.com).

A public entity must reasonably modify its policies, practices, or procedures to avoid discrimination. To request a modification in accordance with the Americans with Disabilities Act, email [SantaFeLED@dalkiasolutions.com](mailto:SantaFeLED@dalkiasolutions.com) or call 505-219-3780.

You're receiving this email because you're on the LED Street Lighting Conversion contact list. If you wish to be removed, please reply "STOP" to this email or email [SantaFeLED@dalkiasolutions.com](mailto:SantaFeLED@dalkiasolutions.com).

The project website, SantaFeLED.com, was updated to include additional information about the conversion including project benefits, FAQs, maps, and a feedback form with a new automated categorization and response feature to ensure each resident is contacted to resolve their needs.

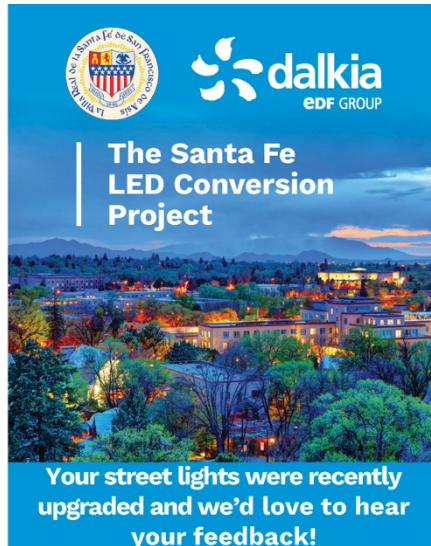
## DOOR HANGERS

Door hangers are being distributed to 4% of residences in each Segment after their street lights have been converted. The door hanger features a QR-code which links to the website, the website URL, and our office phone number for feedback pathways. One side of the door hanger is printed in English and one side is printed in Spanish.



## INFORMATION CARDS

Our crews are equipped with cards that feature the same information as the door hangers. If a person approaches a working crew member with questions or comments, the crew member will provide the information they can and provide the person with the informational card so they can submit feedback or questions.



Scan the QR code with your phone for more information.



[SantaFeLED.com](http://SantaFeLED.com)

or call us!  
Phone: 505.219.3780

394-DalkiaSantaFe-DoorHanger.indd 1

9/8/21 12:26 P



Escanea el código QR con tu teléfono móvil para obtener más información.



[SantaFeLED.com](http://SantaFeLED.com)

¡o llámanos!  
Teléfono: 505.219.3780

394-DalkiaSantaFe-DoorHanger.indd 1

9/8/21 12:26 P